

12-position Vacuum Manifold



16-position Vacuum Manifold



24-position Vacuum Manifold



10-position Flash Vacuum Manifold

SPE Vacuum Manifolds & Accessories

SPE Vacuum Manifold

Vacuum manifolds for SPE sample preparation, filtration, and elution are available in 12-, 16-, and 24-port configurations. These manifolds permit consistent extraction and filtration results. Multiple sample processing with these manifolds simplifies procedures and saves time. The manifolds consist of a clear glass chamber and lid to which a vacuum is applied to draw a sample through an SPE column, cartridge, or disk.

Adjustable racks placed in the glass vacuum chamber will accommodate a variety of sample collection vessels, including test tubes, autosampler vials, volumetric flasks, and Erlenmeyer flasks. Eluants are deposited directly into the collection vessel of choice via polypropylene, optional stainless steel, or Teflon needles. Drying attachments for the 12- and 24-port manifolds will direct a flow of air or nitrogen into the collection vessels to dry eluants prior to further analysis. Drying attachments can also be connected, via adapters, to SPE columns or cartridges in order to dry the column or cartridge prior to final elution. Optional disposable solvent resistant polypropylene containers are available for the twelve port manifolds. These waste containers greatly simplify sample preparation, solvent disposal, and clean-up.

12 Position Vacuum Manifold Set-Complete

Art.	Description	Package
2.CR1012.0001	Includes: <ul style="list-style-type: none"> • 1 glass chamber • 1 cover, gasket, & 12 stopcocks • 1 vacuum gauge & valve assembly • 12 polypropylene needles • Collection rack shelves, legs, clips, & posts • 6 plates • 1 waste container 	1 pcs

16 Position Vacuum Manifold Set-Complete

Art.	Description	Package
2.CR1416.0001	Includes: <ul style="list-style-type: none"> • 1 glass chamber • 1 cover, gasket, & 16 stopcocks • 1 vacuum gauge & valve assembly • 16 polypropylene needles • Collection rack shelves, legs, clips, & posts • 4 plates 	1 pcs

24 Position Vacuum Manifold Set-Complete

Art.	Description	Package
2.CR1824.0001	Includes: <ul style="list-style-type: none"> • 1 glass chamber • 1 cover, gasket, & 24 stopcocks • 1 vacuum gauge & valve assembly • 24 polypropylene needles • Collection rack shelves, legs, clips, & posts • 4 plates 	1 pcs

10 Position Flash Vacuum Manifold

For your large column applications from 10 to 70g, these introduced processing stations target the large SPE and Flash columns. Typically vacuum manifolds can handle only 12, 16, or 24 normal size columns, but for those samples that require larger capacity, we have developed a new larger manifold. With 10 positions, the unit is able to address the larger solvent volumes.

10 Position Flash Vacuum Manifold Set-Complete

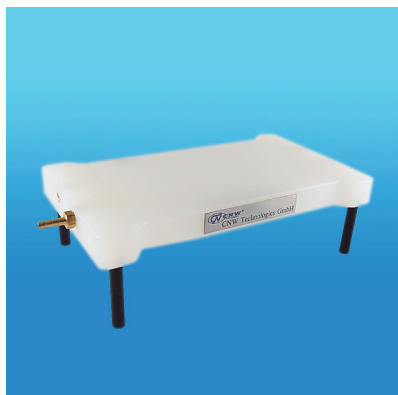
Art.	Description	Package
2.CR2010.0001	Includes: <ul style="list-style-type: none"> • 1 glass chamber • 1 cover, gasket, & 10 stopcocks • 1 vacuum gauge & valve assembly • 10 polypropylene needles • Collection rack shelves, legs, clips, & posts • 4 plates 	1 pcs

Drying Attachments

Drying Attachments are available for the 12-, 16-, and 24-port manifolds and 10-port flash manifold, which will direct the flow of air or nitrogen into the collection vessels to concentrate eluants, prior to further analysis. Drying attachments can also be connected directly to columns, cartridges, or disks in adapters to permit drying sorbent beds, prior to final elution.

Drying Attachment

Art.	Description	Package
2.CR1027.0001	12 Position Drying Attachment	1 pcs
2.CR1431.0001	16 Position Drying Attachment	1 pcs
2.CR1839.0001	24 Position Drying Attachment	1 pcs
2.CR2025.0001	10 Position Drying Attachment for Flash Manifold	1 pcs

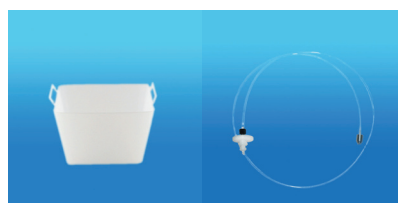


Drying Attachment

12 Position PP Vacuum Waste Container

Disposable solvent resistant polypropylene waste container; for 12-port manifold, greatly simplify sample preparation, solvent disposal, and final clean-up of the manifold.

The liner is designed to contain all liquids used in SPE sample preparation. Place the disposable liner into the glass vacuum chamber, and replace the manifold lid. Just prior to final elution, the liner, containing the waste solvents, is removed from the vacuum chamber. Waste solvents should be properly discarded from the container. It can be cleaned and re-used a number of times, prior to discarding.



Waste Container

Large Volume
Sampler**12 Position PP Vacuum Waste Container**

Art.	Description	Package
2.CR1028.0001	Disposable waste container, PP	10 pcs

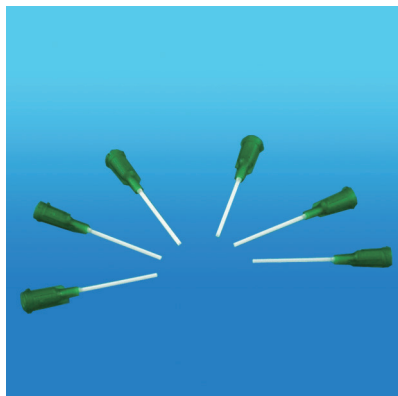
Large Volume Sampler

Large volume sampler enables you to transfer low viscosity samples directly from any sample container to conventional SPE tubes on the SPE vacuum manifold. It contains 1/8-inch PTFE tubing with a SPE adapter at one end for connecting SPE tubes and a stainless steel weight at the other end for touching the bottom of sample container. Note that large volume sampler can only be used with polypropylene SPE tubes.

Large Volume Sampler

Art.	Description	Package
2.CA3001.0001	For use with 3 or 6mL SPE tubes	1 pcs

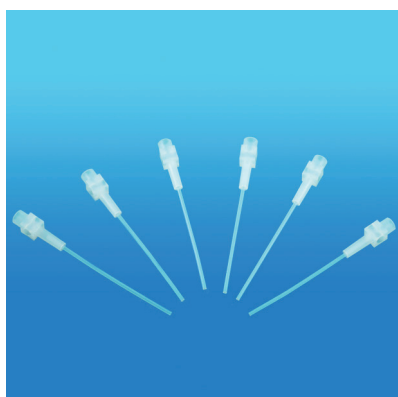
Large Volume Sampler with Vacuum
Manifold



Needles-Polypropylene



Needles-Stainless Steel



Needles-Teflon

Glass Chamber with
Vacuum Gauge, ValveCover, Gasket,
Stopcocks

Optional Needles for Vacuum Manifold

The optional disposable solvent resistant PP needles and stainless steel needles are used for most applications.

Disposable Teflon Needles are designed to fit through the manifold lid via the luer fitting. These needles deliver the eluant directly from the SPE extraction column or cartridge into the collection vessel in the vacuum chamber. These needles, when used in conjunction with Teflon columns and Teflon frits ensure zero extractables from the column, frits, and fluid path. This combination is especially useful for critical sample analysis, such as environmental samples.

Needles - Polypropylene

Art.	Description	Package
2.CR1017.0001	For use with 12-port manifold	12 pcs
2.CR1421.0001	For use with 16-port manifold	16 pcs
2.CR1829.0001	For use with 24-port manifold	24 pcs
2.CR2015.0001	For use with 10-port flash manifold	10 pcs

Needles - Stainless Steel

Art.	Description	Package
2.CR1018.0001	For use with 12-port manifold	12 pcs
2.CR1422.0001	For use with 16-port manifold	16 pcs
2.CR1830.0001	For use with 24-port manifold	24 pcs
2.CR2016.0001	For use with 10-port flash manifold	10 pcs

Needles - Teflon

Art.	Description	Package
2.CR1205.0001	For use with SPE Vacuum Manifolds	50 pcs
2.CR1210.0001	For use with SPE Vacuum Manifolds	100 pcs

Other Vacuum Manifold Components

Glass Chamber

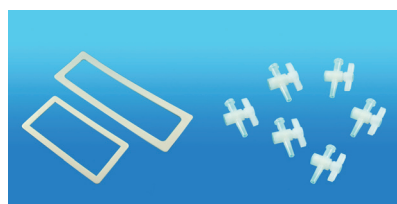
Art.	Description	Package
2.CR1013.0001	Glass chamber, for use with 12-port manifold	1 pcs
2.CR1417.0001	Glass chamber, for use with 16-port manifold	1 pcs
2.CR1825.0001	Glass chamber, for use with 24-port manifold	1 pcs
2.CR2011.0001	Glass chamber, for use with 10-port flash manifold	1 pcs

Glass Chamber with Vacuum Gauge, Valve

Art.	Description	Package
2.CR1016.0001	Glass Chamber with Vacuum Gauge, Valve, for use with 12-port manifold	1 pcs
2.CR1420.0001	Glass Chamber with Vacuum Gauge, Valve, for use with 16-port manifold	1 pcs
2.CR1828.0001	Glass Chamber with Vacuum Gauge, Valve, for use with 24-port manifold	1 pcs
2.CR2014.0001	Glass Chamber with Vacuum Gauge, Valve, for use with 10-port flash manifold	1 pcs

Cover, Gasket, Stopcocks Assembly

Art.	Description	Package
2.CR1014.0001	Assembly, for use with 12-port manifold, included 12 stopcocks	1 pcs
2.CR1418.0001	Assembly, for use with 16-port manifold, included 16 stopcocks	1 pcs
2.CR1826.0001	Assembly, for use with 24-port manifold, included 24 stopcocks	1 pcs
2.CR2012.0001	Assembly, for use with 10-port flash manifold, included 10 stopcocks	1 pcs



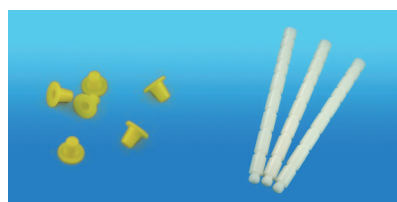
Gaskets Stopcocks



Collection Rack Shelves, Legs, Clips, Posts



Female & Male Luer Fittings Legs for Cover



Plugs Support Posts



Clips Base Plate with Posts

Gaskets

Art.	Description	Package
2.CR1015.0001	Gaskets, for use with 12-port manifold	2 pcs
2.CR1419.0001	Gaskets, for use with 16-port manifold	2 pcs
2.CR1827.0001	Gaskets, for use with 24-port manifold	2 pcs
2.CR2013.0001	Gaskets, for use with 10-port flash manifold	2 pcs

Stopcocks

Art.	Description	Package
2.CR1026.0001	For use with 12-port manifold	12 pcs
2.CR1430.0001	For use with 16-port manifold	16 pcs
2.CR1838.0001	For use with 24-port manifold	24 pcs
2.CR2024.0001	For use with 10-port flash manifold	10 pcs

Collection Rack Shelves, Legs, Clips, & Posts

Art.	Description	Package
2.CR1019.0001	Collection Rack Shelves, Legs, Clips, & Posts, for use with 12-port manifold	1 pcs
2.CR1423.0001	Collection Rack Shelves, Legs, Clips, & Posts, for use with 16-port manifold	1 pcs
2.CR1831.0001	Collection Rack Shelves, Legs, Clips, & Posts, for use with 24-port manifold	1 pcs
2.CR2017.0001	Collection Rack Shelves, Legs, Clips, & Posts, for use with 10-port flash manifold	1 pcs

Female Luer Fittings, & Male Luer Fittings

Art.	Description	Package
2.CR1102.0001	Female Luer Fittings, for use with 12-, 16-, and 24-port manifolds and 10-port flash manifold	2 pcs
2.CR1103.0001	Male Luer Fittings, for use with 12-, 16-, and 24-port manifolds and 10-port flash manifold	2 pcs

Legs for Cover - Black

Art.	Description	Package
2.CR1105.0001	Black legs, for use with 12-, 16-, and 24-port manifolds and 10-port flash manifold	4 pcs

Vacuum Manifold Plugs

Art.	Description	Package
2.CR1110.0001	plugs, for use with 12-, 16-, and 24-port manifolds and 10-port flash manifold	2 pcs

Support Posts for Rack

Art.	Description	Package
2.CR1104.0001	Support posts, included with 12-, 16-, and 24-port manifolds	3 pcs
2.CR2026.0001	Support posts, included with 10-port flash manifold	3 pcs

Retaining Clips

Art.	Description	Package
2.CR1109.0001	Retaining clips, included with 12-, 16-, and 24-port manifolds and 10-port flash manifold	12 pcs

Plate - Base

The base plate is used for fixing the collection rack shelves.

Art.	Description	Package
2.CR1025.0001	For use with 12-port manifold	1 pcs
2.CR1429.0001	For use with 16-port manifold	1 pcs
2.CR1837.0001	For use with 24-port manifold	1 pcs
2.CR2023.0001	For use with 10-port flash manifold	1 pcs



Plate-Dimple

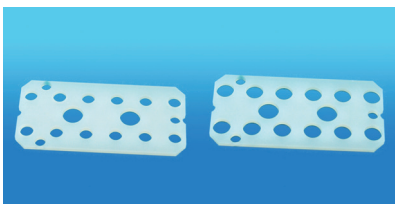


Plate-13mm

Plate-16mm

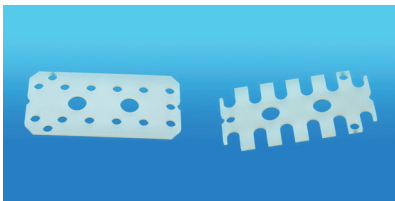


Plate-Autosampler Vial

Plate-Volumetric Flask



Plate-19mm,25mm

Plate -Dimple

The dimple plate is used when utilizing test tubes as collection vessels.

Art.	Description	Package
2.CR1024.0001	For use with 12-port manifold	1 pcs
2.CR1428.0001	For use with 16-port manifold	1 pcs
2.CR1836.0001	For use with 24-port manifold	1 pcs
2.CR2022.0001	For use with 10-port flash manifold	1 pcs

Plate - 13mm

It is used for keeping 13mm test tubes.

Art.	Description	Package
2.CR1020.0001	13mm plate, for use with 12-port manifold	1 pcs
2.CR1424.0001	13mm plate, for use with 16-port manifold	1 pcs
2.CR1832.0001	13mm plate, for use with 24-port manifold	1 pcs

Plate - 16mm

It is used for keeping 16mm test tubes.

Art.	Description	Package
2.CR1022.0001	16mm plate, for use with 12-port manifold	1 pcs
2.CR1426.0001	16mm plate, for use with 16-port manifold	1 pcs
2.CR1834.0001	16mm plate, for use with 24-port manifold	1 pcs

Plate -Autosampler Vial

Art.	Description	Package
2.CR1023.0001	Autosampler Vial plate, included with 12-port manifold only	1 pcs

Plate - Volumetric Flask

Art.	Description	Package
2.CR1021.0001	Volumetric Flask plate, included with 12-port manifold only	1 pcs

Plate - 19mm

It is used for keeping 19mm test tubes.

Art.	Description	Package
2.CR2018.0001	19mm plate, included with 10-port flash manifold only	1 pcs

Plate - 25mm

It is used for keeping 25mm test tubes.

Art.	Description	Package
2.CR2020.0001	25mm plate, included with 10-port flash manifold only	1 pcs

Glass Test Tubes

It is used for collecting eluates.

Art.	Description	Package
2.CR9005.0001	Test tubes, without rim, 5mL, 12 mm × 75 mm.	12 pcs
2.CR9012.0001	Test tubes, without rim, 12mL, 16 mm × 100 mm.	12 pcs



Single Station SPE Disk Manifold, 47mm

SPE Disk Manifolds & Accessories

Use the manifolds with 47mm and 90mm SPE disks. The unique design of the manifolds are unlimited expandability, compact, efficient size, user friendly design, accepts many standard collection vessels, designed for all SPE sample prep methods, and satisfaction Guaranteed!

Whether you are performing Oil and Grease Method 1664, Method 525.1, 525.2, 550.1, 608, or 549.1, our Manifold has been designed to facilitate your analysis. For easy loading and leak-proof sealing of the SPE disk, the manifold utilizes a unique threaded Screw cap to hold the glass sample reservoir in place over the disk. This novel design allows for simple replacement of the SPE disk with minimal disassembly of the manifold.

Single Station SPE Disk Manifold, 47mm

Art.	Description	Package
2.CP0383.0001	A complete 47mm single station comes with mounting hardware, Glass Sample Reservoir, Disk Support Screen and 25×200mm Sample Collection Vessel.	1 pcs

2 - Station SPE Disk Manifold, 47mm

Art.	Description	Package
2.CP0200.0001	A complete 47mm 2-station comes with mounting hardware, Glass Sample Reservoir, Disk Support Screen and 25×200mm Sample Collection Vessel.	1 pcs

3 - Station SPE Disk Manifold, 47mm

Art.	Description	Package
2.CP0100.0001	A complete 47mm 3-station comes with mounting hardware, Glass Sample Reservoir, Disk Holder and 25×200mm Sample Collection Vessel.	1 pcs

6 - Station SPE Disk Manifold, 47mm

Art.	Description	Package
2.CP0080.0001	A complete 47mm 6-station comes with mounting hardware, Glass Sample Reservoir, Disk Holder and 25×200mm Sample Collection Vessel.	1 pcs



3-Station SPE Disk Manifold, 47mm

Single Station SPE Disk Manifold, 90mm

Art.	Description	Package
2.CP0389.0001	A complete 90mm single station comes with mounting hardware, Glass Sample Reservoir, Disk Holder and 25×200mm Sample Collection Vessel.	1 pcs

6 - Station SPE Disk Manifold, 90mm

Art.	Description	Package
2.CP0090.0001	A complete 90mm 6-station comes with mounting hardware, Glass Sample Reservoir, Disk Support Screen and 25×200mm Sample Collection Vessel.	1 pcs

Racks for Disk Manifolds

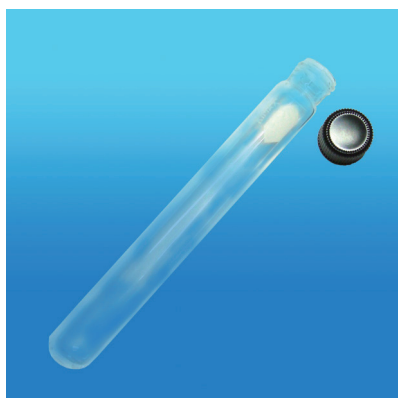
Art.	Description	Package
2.CP0351.0001	Rack for 3-station	1 pcs
2.CP0352.0001	Rack for 6-station	1 pcs

Sample Reservoir

Art.	Description	Package
2.CP0432.0001	1000mL, for use with 47mm Manifold	1 pcs
2.CP0433.0001	1000mL, for use with 90mm Manifold	1 pcs



Disk Holder



Sample Collection Vessel

Disk Holder

The disk holder includes 316 SS disk support screen, a threaded screw cap to provide attachment of sample reservoir and a PTFE valve to control solvent fluid.

Art.	Description	Package
2.CP0236.0001	Disk holder, for use with 47mm Manifold	1 pcs
2.CP0336.0001	Disk holder, for use with 90mm Manifold	1 pcs

Sample Collection Vessel

Art.	Description	Package
2.CP0502.0001	Sample Collection Vessel, for use with 47mm and 90mm Manifolds, 25×200mm, round bottom	1 pcs
2.CP0501.0001	Sample Collection Vessel, for use with 47mm and 90mm Manifolds, 28×95mm, flat bottom	1 pcs
2.CP0503.0001	Disk SPE Concentration Tube, for use with 47mm and 90mm Manifolds, 15mL,	1 pcs

Empore™ Extraction Disks

Art.	Description	Package
2.CP2173.0001	Empore™ C18 47 mm Extraction Disk	20 pcs
2.CP2231.0001	Empore™ SDB-XC 47 mm Extraction Disk	20 pcs
2.CP2264.0001	Empore™ SDB-RPS 47 mm Extraction Disk	20 pcs
2.CP2181.0001	Empore™ C18 90 mm Extraction Disk	10 pcs